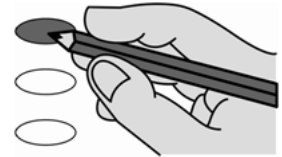


Official Republican Party Ballot
2022 Primary Election
 June 7, 2022
 County of Woodbury, State of Iowa
 43 Smithland



 Precinct Election Official

- 1 Voting Mark.** To vote completely fill in the oval next to your choice.
- 2 Write-in Votes.** To vote for a person whose name is not on the ballot, write the name on the write-in line below the list of candidates and fill in the oval next to it.
- 3 Use only a black ballpoint pen to mark your ballot.**
- 4 Do not cross out,** if you change your mind, exchange your ballot for a new one.



Federal Offices	State Offices	County Offices
<p align="center">For U.S. Senator Vote for no more than ONE</p> <p><input type="radio"/> Jim Carlin</p> <p><input type="radio"/> Chuck Grassley</p> <p><input type="radio"/> _____ Write-in</p>	<p align="center">For Attorney General Vote for no more than ONE</p> <p><input type="radio"/> Brenna Bird</p> <p><input type="radio"/> _____ Write-in</p>	<p align="center">For Board of Supervisors District 2 Vote for no more than ONE</p> <p><input type="radio"/> Daniel A. Bittinger II</p> <p><input type="radio"/> _____ Write-in</p>
<p align="center">For U.S. Representative District 4 Vote for no more than ONE</p> <p><input type="radio"/> Randy Feenstra</p> <p><input type="radio"/> _____ Write-in</p>	<p align="center">For State Senator District 7 Vote for no more than ONE</p> <p><input type="radio"/> Kevin Alons</p> <p><input type="radio"/> _____ Write-in</p>	<p align="center">For Board of Supervisors District 4 Vote for no more than ONE</p> <p><input type="radio"/> Matthew A. Ung</p> <p><input type="radio"/> _____ Write-in</p>
<p>State Offices</p>	<p align="center">For State Representative District 13 Vote for no more than ONE</p> <p><input type="radio"/> Mark Peters</p> <p><input type="radio"/> Ken E. Carlson</p> <p><input type="radio"/> _____ Write-in</p>	<p align="center">For County Treasurer Vote for no more than ONE</p> <p><input type="radio"/> Tina M. Bertrand</p> <p><input type="radio"/> _____ Write-in</p>
<p align="center">For Governor Vote for no more than ONE</p> <p><input type="radio"/> Kim Reynolds</p> <p><input type="radio"/> _____ Write-in</p>		<p align="center">For County Attorney Vote for no more than ONE</p> <p><input type="radio"/> Jacklyn Fox</p> <p><input type="radio"/> James D. Loomis</p> <p><input type="radio"/> _____ Write-in</p>
<p align="center">For Secretary of State Vote for no more than ONE</p> <p><input type="radio"/> Paul D. Pate</p> <p><input type="radio"/> _____ Write-in</p>		
<p align="center">For Auditor of State Vote for no more than ONE</p> <p><input type="radio"/> Todd Halbur</p> <p><input type="radio"/> Mary Ann Hanusa</p> <p><input type="radio"/> _____ Write-in</p>		
<p align="center">For Treasurer of State Vote for no more than ONE</p> <p><input type="radio"/> Roby Smith</p> <p><input type="radio"/> _____ Write-in</p>		
<p align="center">For Secretary of Agriculture Vote for no more than ONE</p> <p><input type="radio"/> Mike Naig</p> <p><input type="radio"/> _____ Write-in</p>		
087	Typ:03 Seq:0043 Spl:01	

SAMPLE