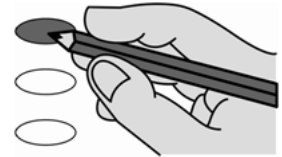


**Official Republican Party Ballot**  
**2022 Primary Election**  
 June 7, 2022  
 County of Woodbury, State of Iowa  
 37 Bronson



\_\_\_\_\_  
 Precinct Election Official

- 1 Voting Mark.** To vote completely fill in the oval next to your choice.
- 2 Write-in Votes.** To vote for a person whose name is not on the ballot, write the name on the write-in line below the list of candidates and fill in the oval next to it.
- 3 Use only a black ballpoint pen to mark your ballot.**
- 4 Do not cross out,** if you change your mind, exchange your ballot for a new one.



Federal Offices	State Offices	County Offices
<p align="center"><b>For U.S. Senator</b> Vote for no more than ONE</p> <p><input type="radio"/> Jim Carlin</p> <p><input type="radio"/> Chuck Grassley</p> <p><input type="radio"/> _____ Write-in</p>	<p align="center"><b>For Attorney General</b> Vote for no more than ONE</p> <p><input type="radio"/> Brenna Bird</p> <p><input type="radio"/> _____ Write-in</p>	<p align="center"><b>For Board of Supervisors District 2</b> Vote for no more than ONE</p> <p><input type="radio"/> Daniel A. Bittinger II</p> <p><input type="radio"/> _____ Write-in</p>
<p align="center"><b>For U.S. Representative District 4</b> Vote for no more than ONE</p> <p><input type="radio"/> Randy Feenstra</p> <p><input type="radio"/> _____ Write-in</p>	<p align="center"><b>For State Senator</b> District 7 Vote for no more than ONE</p> <p><input type="radio"/> Kevin Alons</p> <p><input type="radio"/> _____ Write-in</p>	<p align="center"><b>For Board of Supervisors District 4</b> Vote for no more than ONE</p> <p><input type="radio"/> Matthew A. Ung</p> <p><input type="radio"/> _____ Write-in</p>
<p><b>State Offices</b></p>	<p align="center"><b>For State Representative</b> District 13 Vote for no more than ONE</p> <p><input type="radio"/> Mark Peters</p> <p><input type="radio"/> Ken E. Carlson</p> <p><input type="radio"/> _____ Write-in</p>	<p align="center"><b>For County Treasurer</b> Vote for no more than ONE</p> <p><input type="radio"/> Tina M. Bertrand</p> <p><input type="radio"/> _____ Write-in</p>
<p align="center"><b>For Governor</b> Vote for no more than ONE</p> <p><input type="radio"/> Kim Reynolds</p> <p><input type="radio"/> _____ Write-in</p>		<p align="center"><b>For County Attorney</b> Vote for no more than ONE</p> <p><input type="radio"/> Jacklyn Fox</p> <p><input type="radio"/> James D. Loomis</p> <p><input type="radio"/> _____ Write-in</p>
<p align="center"><b>For Secretary of State</b> Vote for no more than ONE</p> <p><input type="radio"/> Paul D. Pate</p> <p><input type="radio"/> _____ Write-in</p>		
<p align="center"><b>For Auditor of State</b> Vote for no more than ONE</p> <p><input type="radio"/> Todd Halbur</p> <p><input type="radio"/> Mary Ann Hanusa</p> <p><input type="radio"/> _____ Write-in</p>		
<p align="center"><b>For Treasurer of State</b> Vote for no more than ONE</p> <p><input type="radio"/> Roby Smith</p> <p><input type="radio"/> _____ Write-in</p>		
<p align="center"><b>For Secretary of Agriculture</b> Vote for no more than ONE</p> <p><input type="radio"/> Mike Naig</p> <p><input type="radio"/> _____ Write-in</p>		
081	Typ:03 Seq:0037 Spl:01	

SAMPLE