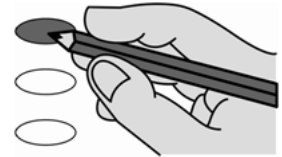


Official Democratic Party Ballot
2022 Primary Election
 June 7, 2022
 County of Woodbury, State of Iowa
 20 Irving Elementary School



 Precinct Election Official

- 1 **Voting Mark.** To vote completely fill in the oval next to your choice.
- 2 **Write-in Votes.** To vote for a person whose name is not on the ballot, write the name on the write-in line below the list of candidates and fill in the oval next to it.
- 3 **Use only a black ballpoint pen to mark your ballot.**
- 4 **Do not cross out,** if you change your mind, exchange your ballot for a new one.



Federal Offices	State Offices	County Offices
<p align="center">For U.S. Senator Vote for no more than ONE</p> <p><input type="radio"/> Michael Franken</p> <p><input type="radio"/> Glenn Hurst</p> <p><input type="radio"/> Abby Finkenauer</p> <p><input type="radio"/> _____ Write-in</p>	<p align="center">For Attorney General Vote for no more than ONE</p> <p><input type="radio"/> Tom Miller</p> <p><input type="radio"/> _____ Write-in</p> <hr/> <p align="center">For State Senator District 1 Vote for no more than ONE</p> <p><input type="radio"/> Jackie Smith</p> <p><input type="radio"/> _____ Write-in</p>	<p align="center">For Board of Supervisors District 2 Vote for no more than ONE</p> <p><input type="radio"/> Maria Rundquist</p> <p><input type="radio"/> Jeremy Dumkrieger</p> <p><input type="radio"/> _____ Write-in</p>
<p align="center">For U.S. Representative District 4 Vote for no more than ONE</p> <p><input type="radio"/> Ryan Melton</p> <p><input type="radio"/> _____ Write-in</p>	<p align="center">For State Representative District 2 Vote for no more than ONE</p> <p><input type="radio"/> Steve Hansen</p> <p><input type="radio"/> _____ Write-in</p>	<p align="center">For Board of Supervisors District 4 Vote for no more than ONE</p> <p>No Candidate</p> <p><input type="radio"/> _____ Write-in</p>
State Offices		
<p align="center">For Governor Vote for no more than ONE</p> <p><input type="radio"/> Deidre DeJear</p> <p><input type="radio"/> _____ Write-in</p>		<p align="center">For County Treasurer Vote for no more than ONE</p> <p>No Candidate</p> <p><input type="radio"/> _____ Write-in</p>
<p align="center">For Secretary of State Vote for no more than ONE</p> <p><input type="radio"/> Eric Van Lancker</p> <p><input type="radio"/> Joel Miller</p> <p><input type="radio"/> _____ Write-in</p>		<p align="center">For County Attorney Vote for no more than ONE</p> <p><input type="radio"/> Patrick PJ Jennings</p> <p><input type="radio"/> _____ Write-in</p>
<p align="center">For Auditor of State Vote for no more than ONE</p> <p><input type="radio"/> Rob Sand</p> <p><input type="radio"/> _____ Write-in</p>		
<p align="center">For Treasurer of State Vote for no more than ONE</p> <p><input type="radio"/> Michael L. Fitzgerald</p> <p><input type="radio"/> _____ Write-in</p>		
<p align="center">For Secretary of Agriculture Vote for no more than ONE</p> <p><input type="radio"/> John Norwood</p> <p><input type="radio"/> _____ Write-in</p>		

020

Typ:02 Seq:0020 Spl:01

SAMPLE